



**INTERNATIONAL ETHELLES CLASS  
2018 European Championship**

**24 to 27 August 2018**

**Cowes, Isle of Wight, England**

The Organising Authority is the Royal London Yacht Club  
in conjunction with the Cowes Etchells Fleet

**REGATTA OFFICIALS**

Interim Class Captain:	Shaun Frohlich
Event Organiser:	Royal London Yacht Club
Race Officer:	Gill Smith
Protest Committee Chairman:	Jamie Clark



**INTERNATIONAL ETHELLS  
CLASS  
2018 Open European Championship**



**SAILING INSTRUCTIONS**

**1. RULES**

- 1.1 The regatta will be governed by
- (a) the 'rules' as defined in the Racing Rules of Sailing 2017-2020 (RRS)
  - (b) the International Etchells Class rules
  - (c) the byelaws for the Port of Southampton, Portsmouth Harbour and Cowes Harbour. See also Appendices 2 and 3.
- 1.2 In the event of conflict between the notice of race and these sailing instructions, these sailing instructions shall prevail. This changes rule 63.7.

**2. NOTICES TO COMPETITORS**

- 2.1 Notices to competitors will be posted on the official notice board located on the side of the Etchells container at the Cowes Yacht Haven (CYH).
- 2.2 VHF channel 72 will be used for radio communication. See SIs 8, 11.3, 11.4, 18.5, 23.2 and 26.2.

**3. CHANGES TO SAILING INSTRUCTIONS**

- 3.1 Any change to the sailing instructions will be posted before 0900 on the day it will take effect, except that any change to the schedule of races will be posted by 2000 on the day before it will take effect.

**4. SIGNALS MADE ASHORE**

- 4.1 Signals made ashore will be displayed at the Cowes Yacht Haven and may be repeated at the Royal London Yacht Club flagstaff.
- 4.2 When flag AP is displayed ashore, '1 minute' is replaced with 'not less than 45 minutes' in race signal AP. This changes RRS Race Signals.

**5. REGISTRATION**

- 5.1 Crew weigh-in and sail nomination as detailed in the notice of race are required to be completed by 0900 on Friday 24 August.
- 5.2 The organising authority will supply and affix Bow Sticker numbers before racing which may not be removed or moved. It is the responsibility of competitors to ensure that these are in place before leaving the dock each day.

**6. SCHEDULE OF RACES**

- 6.1 Racing and associated events are scheduled as follows:

Date	HW *	Time	Event	Location
Friday 24 August	1120 4.3m	0900 1155	Skippers Briefing First warning signal	CYH Central Solent
Saturday 25 August	1158 4.5m	1055	First warning signal	Central Solent
Sunday 26 August	1236 4.5m	1055 1600	First warning signal No warning signal later than this time	Central Solent
Monday 27 August	1311 4.6m	1055 1500 After racing	First warning signal No warning signal later than this time Prize-giving	Central Solent CYH

\* all HW times refer to HW Portsmouth and are BST

- 6.2 Up to eight races are scheduled over the four days 24-27 August 2018. It is the intention of the race committee to run two races per day. No more than three races may be sailed on any race day.
- 6.3 When more than one race will be held on the same day, the warning signal for each succeeding race will be made as soon as practicable. To alert boats that another race will begin soon, AP will be displayed at the finish of the previous race.

## **7 CLASS FLAG**

- 7.1 The class flag will be the Etchells class insignia on a white background or IC Flag E.

## **8 RACING AREA**

- 8.1 Racing will take place in the Central Solent including the Bramble Bank.
- 8.2 The race committee will broadcast from around 0930 (1000 on Friday 24 August) on VHF channel 72 the two-digit code of a fixed mark near to the intended starting area (See Appendix 4).

## **9 THE COURSE**

- 9.1 The diagrams in Appendix 1 show the course configuration, including the order in which marks are to be passed, and the side on which each mark is to be left. The length of the windward legs will be up to approximately 2 nm.
- 9.2 The course to be sailed will be designated by displaying numeral pennant 1 or 2 from the race committee vessel no later than the warning signal.
- 9.3 The race committee vessel may display the approximate compass bearing and distance from the starting line to mark 1.

## **10 MARKS**

- 10.1 Marks 1, 2, 3P and 3S will be red inflatable rectangular, or as described at the briefing.
- 10.2 New marks, as provided in SI 12.1, will be black inflatable, either rectangular or triangular.
- 10.3 The centre-line indicator buoy, if laid, will be an orange inflated buoy.
- 10.4 The race committee may lay an inner distance mark on or just in pre-start area of the starting line. While racing, boats shall not pass between this mark and the committee boat.

## **11 THE START**

- 11.1 The starting line is between the staffs displaying orange flags on race committee vessels at each end of the starting line, or between the staff displaying an orange flag on the committee boat at the starboard end of the line and the course side of an orange inflatable mark at the port end of the line. A centre-line indicator buoy may be laid. This buoy is not a mark of the course and has no status.
- 11.2 A boat starting later than 10 minutes after the starting signal will be scored DNS. This changes rules 63.1, A4.1 and A.5.
- 11.3 The race committee will attempt to broadcast OCS, UFD and BFD boats using the bow or sail numbers by radio on VHF channel 72. Failure of equipment, failure to hear or any delay to broadcast or the order of the bow or sail numbers broadcast shall not be grounds for redress. This changes rule 62.1(a).
- 11.4 A race committee boat stationed near mark 1 may display the bow numbers of boats that have violated rule 30.3 and 30.4. Other race committee boats may also be used on the first windward leg for such display or hail. Boats identified under this instruction shall promptly leave the race course and not interfere with boats still racing.

## **12 CHANGE OF THE NEXT LEG OF THE COURSE**

- 12.1 To change the next leg of the course, the race committee will lay a new mark (or move the finishing line) and remove the original mark as soon as practicable. When in a subsequent change a new mark is replaced, it will be replaced by an original mark. The change will be signaled before the leading boat has begun the leg, although the mark (or finishing line) may not yet be in the new position.
- 12.2 The position of any laid inflatable mark(s) may be adjusted by up to plus or minus 10 degrees and up to approximately 500 metres to windward or leeward, relative to the previous position, without signaling code flag C nor '+' nor '-'. This changes rule 33.

## **13 THE FINISH**

- 13.1 The finishing line will be between a staff displaying an orange flag on the committee vessel and a laid inflatable mark at the other end of the line.
- 13.2 The race committee may shorten the line to a more appropriate length for the finish.

## **14 PENALTY SYSTEM**

- 14.1 The penalty for breaking a rule of Part 2 and rule 31 shall be a One Turn Penalty (one tack and one gybe in the same direction) except that for infringements of a rule of Part 2 occurring within the zone as defined in the current RRS the penalty shall be a Two Turns Penalty (two tacks and two gybes in the same direction). This changes rules 44.1 and 44.2.
- 14.2 A boat that has taken a penalty or retired under rule 44.1 shall complete an acknowledgement form at the regatta office within the protest time limit.

## **15 TIME LIMITS**

- 15.1 The time limit for course 1 will be 3 hours from the starting signal and for course 2 will be 2 hours from the starting signal.
- 15.2 If no boat has passed the first windward mark within 60 minutes of the starting signal, the race shall be abandoned.
- 15.3 Boats failing to finish within 20 minutes after the first boat sails the course and finishes will be scored DNF. This changes rules 35, A4.2 and A5.

## **16 PROTESTS AND REQUESTS FOR REDRESS**

- 16.1 Protest forms are available at the regatta office at Cowes Yacht Haven. Protests shall be delivered there within 90 minutes of the last boat to finish the last race of the day. This time will be posted on the official notice board. This changes rules 61.3 and 62.2.
- 16.2 Notices will be posted within 30 minutes of the protest time limit to inform competitors of hearings in which they are parties or named as witnesses. Hearings will be held at the Cowes Yacht Haven or the Royal London Yacht Club as soon as possible after protest time ends.
- 16.3 Notices of protests by the race committee or the protest committee will be posted within the protest time limit on the official notice board to inform boats under rule 61.1(b).
- 16.4 Prior to a hearing and with the permission of the protest committee, a boat that has broken a rule of Part 2 of the RRS and has not complied with the requirements of rules 31 or 44.1, may accept a 30% place penalty, calculated on the number of boats entered rounded to the nearest whole number (rounding 0.5 upwards), except that she shall not be scored worse than DNF.
- 16.5 For infringements of the rules other than Part 2 and rule 31, the protest committee may award a lesser penalty than DSQ.
- 16.6 For the purpose of rule 64.3(b) the 'authority responsible' is the class international governing committee.
- 16.7 Breaches of SIs 5.2, 14.2, 18, 19, 23, 24 and 25 and rule 55 will not be grounds for protest by a boat. This changes rule 60.1(a). Penalties for these breaches may be less than disqualification if the protest committee so decides.

- 16.8 On the last day of the regatta:
- 16.8.1.1 a request for reopening a hearing shall be delivered within the protest time limit if the party requesting reopening was informed of the decision on the previous day;
  - 16.8.1.2 a request for reopening a hearing held on the last day shall be delivered no later than 30 minutes after the party requesting reopening was informed of the decision on that day;
  - 16.8.1.3 the time limit to request redress based upon an action or omission of the race committee or protest committee shall be 30 minutes after the final results are posted. This changes rules 62 and 66.

## **17 SCORING**

- 17.1 Four races are required to be completed to constitute a series.
- 17.2 When five races have been completed one discard shall be applied. This changes rule A2.

## **18 SAFETY REGULATIONS**

- 18.1 When leaving and entering Cowes Harbour boats shall not sail through the moorings unless safety dictates. (See Appendix 2).
- 18.2 All boats shall observe the ABP byelaw the 'Moving Prohibited Zone' (see Appendix 3) and ABP Notice to Mariners No. 03 of 2016.
- 18.3 Boats shall keep a good look out for commercial traffic and give way to all such vessels.
- 18.4 All boats shall sail on starboard tack close to the stern of the committee boat and hail their sail number prior to the start of the first race each day.
- 18.5 A boat that retires from a race shall notify the race committee as soon as possible on VHF channel 72 or by hailing an official regatta support boat/rib.
- 18.6 All boats while racing shall pass to the north of Cowes breakwater.

## **19 REPLACEMENT OF CREW OR EQUIPMENT**

- 19.1 Substitution of crew will not be allowed without prior written approval of the protest committee, and such requests shall be submitted to the race committee for verification of eligibility and crew weight of the substitute crew.
- 19.2 After measurement until completion of racing, no boat, sail or any item of measured equipment shall leave the venue without being posted on the official equipment sign-out sheet on the official notice board. It is the sole responsibility of each skipper to ensure proper recording.
- 19.3 After measurement until completion of racing, no sail shall be recut or altered. Repairs to sails pursuant to all applicable rules are permissible only upon written approval of the protest committee. All such sails may be subject to re-measurement on completion of repairs.

## **20 EQUIPMENT AND MEASUREMENT CHECKS**

- 20.1 A boat or equipment may be inspected at any time for compliance with the class rules and sailing instructions which may include rule 43 and class rules C.2.2 and C.3.2.
- 20.2 On the water, a boat can be instructed by the race committee or the protest committee to proceed immediately to a designated area for inspection.

## **21 CREW WEIGHING**

- 21.1 Each skipper and crew member of each boat shall be weighed together prior to. Weigh-in will take place between 1730 and 2000 on Thursday 23 August 2018 and between 0800 and 0900 on Friday 24 August 2018 at the Regatta Office at Cowes Yacht Haven.
- 21.2 The total combined weight of crew members for each boat will be posted on the Official Notice Board.
- 21.3 Crews that fail to be weighed by the designated time or fail to make the weight limit (two hundred and eighty five (285) kilos) by the designated time shall be scored DNS for all subsequent races until such time as they comply with Class Rule C.2.2. The race committee may approve an extension of time in extenuating circumstances, and such requests are to be submitted to the race committee.

- 21.4 Crew substitutions shall not be permitted for the purpose making the weight limit.
- 21.5 Weighing scales will be available on each race day in the regatta office at CYH from 0830 to 0930 and from 1700 to 1800.

## **22 OFFICIAL BOATS**

- 22.1 Race committee boats will display 'RC' flags.

## **23 COACH AND SUPPORT BOATS**

- 23.1 Coach and support boats must be registered with the organising authority prior to acting as a coach or support boat and shall provide their own their national sail letters to display on the engine cover at all times while they are acting as a coach or support boat.
- 23.2 All registered coach and support boats will carry on board and operate while on the water a VHF radio capable of transmitting and receiving on VHF channel 72 and agree to assist the race committee if directed to do so.
- 23.3 Competitors shall have no communication with, and boats shall not be tied to, coach or support boats from the first warning signal (or any other time the organising authority considers appropriate) of the day until racing has been concluded for the day. Between races, coach and support boats shall not approach, communicate with or transfer provisions or equipment to or from their supported boats unless in a medical or emergency threatening the health of the crew or the flotation of the boat and only with the expressed permission of the protest committee or the race committee.
- 23.4 Registered coach and support boats and their personnel shall stay at least 100 metres below the starting line and its extensions from the time of the preparatory signal until five minutes after the start of any race. After this time, coach and support boats may then proceed parallel to the course on the starboard side of the course facing the wind at a distance of at least 100 metres outside areas where boats are racing. Coach and support boats shall not go above the weather marks or the course 1 finishing line or below the leeward marks or the course 2 finishing line at any other time while boats are racing.
- 23.5 Coach and support boats shall, when requested by the race committee, tow or assist boats not associated with them. Coach and support boats are to monitor VHF channel 72 and shall follow all instructions from the race committee.
- 23.6 Any breach of SIs 23.1, 23.2, 23.3, 23.4 or 23.5 by a coach or support boat may result in a penalty being applied to any or all boats serviced by that coach or support boat. The penalty may be disqualification or some other penalty as determined by the protest committee.

## **24 HAUL-OUT RESTRICTIONS**

- 24.1 All boats shall be afloat before 0900 on Friday 24 August 2018 and shall not be hauled out during the championship except with and according to the terms of prior written permission of the protest committee. The penalty may be DSQ for any subsequent races.

## **25 PLASTIC POOLS AND BREATHING APPARATUS**

- 25.1 Plastic pools or their equivalent shall not be used around competing yachts between the close of registration and the end of the championship.
- 25.2 The use of breathing apparatus, including snorkels, is not allowed from 0900 on Friday 24 August 2018 until after the last race of the regatta. Any swimmer must be accompanied by a watcher close by.

## **26 RADIO COMMUNICATION**

- 26.1 This supplements but does not change rules 2 and 41 for the IECA. All boats must carry a marine band VHF receiver capable of receiving normal international channels. Boats shall use the radio to report retirement from racing and may use the radio to request assistance in an emergency. No other transmissions are permitted by competing yachts during each racing day from the first warning signal

until the end of the last race of the day.

26.2 The race committee may use VHF channel 72 to provide competitors with race information.

26.3 The use of mobile/cell phones or any device capable of sending and/or receiving external electronic communication and/or connecting to the internet is prohibited after the first warning signal (or any other time considered appropriate by the organising authority) on each race day until the boat has completed its days racing, except as provided in SI 26.1 or in an emergency threatening the safety of any member of the crew or the flotation of the boat and only with the express permission of the protest committee or the race committee.

## **27 WAIVER OF LIABILITY**

27.1 Competitors participate in the regatta entirely at their own risk. See rule 4 Decision to Race and NoR 17. The organising authority will not accept any liability for material damage, personal injury or any fatality sustained in conjunction with or prior to, during or after the championship.

27.2 All boats competing are required to carry valid third party insurance with a minimum cover of GBP 3 million per incident or the equivalent.

## **28. PRIZEGIVING**

28.1 Prizegiving will take place immediately after boats come ashore on Monday 27 August 2018 at Cowes Yacht Haven.

## **29. RISK STATEMENT**

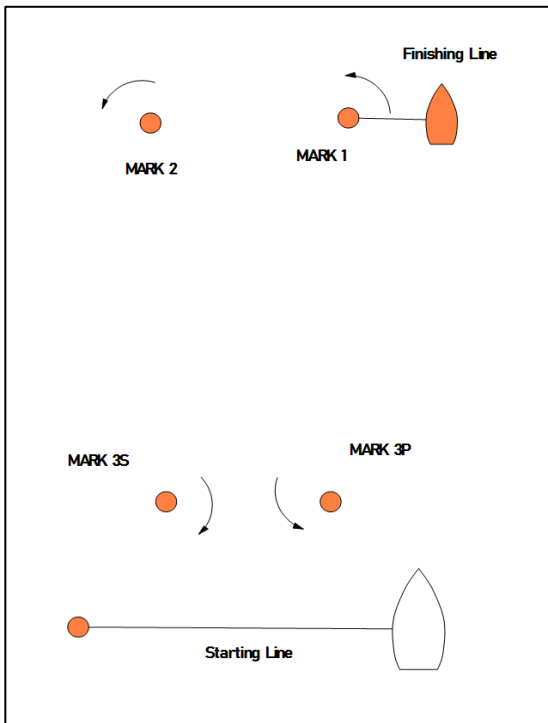
29.1 Rule 4 of the Racing Rules of Sailing states: 'The responsibility for a boat's decision to participate in a race or to continue racing is hers alone.' Sailing is by its nature an unpredictable sport and therefore involves an element of risk. By taking part in the event, each competitor agrees and acknowledges that:

- a) They are aware of the inherent element of risk involved in the sport and accept responsibility for the exposure of themselves, their crew and their boat to such inherent risk whilst taking part;
- b) They are responsible for the safety of themselves, their crew, their boat and their other property whether afloat or ashore;
- c) They accept responsibility for any injury damage or loss to the extent caused by their own actions or omissions;
- d) Their boat is in good order, equipped to sail in the event and they are fit to participate;
- e) The provision of a race management team, patrol boats, umpires and other officials and volunteers by the organiser does not relieve them of their own responsibilities;
- f) The provision of patrol boat cover is limited to such assistance, particularly in extreme weather conditions, as can be practically provided in the circumstances.

# Appendix 1 - Courses

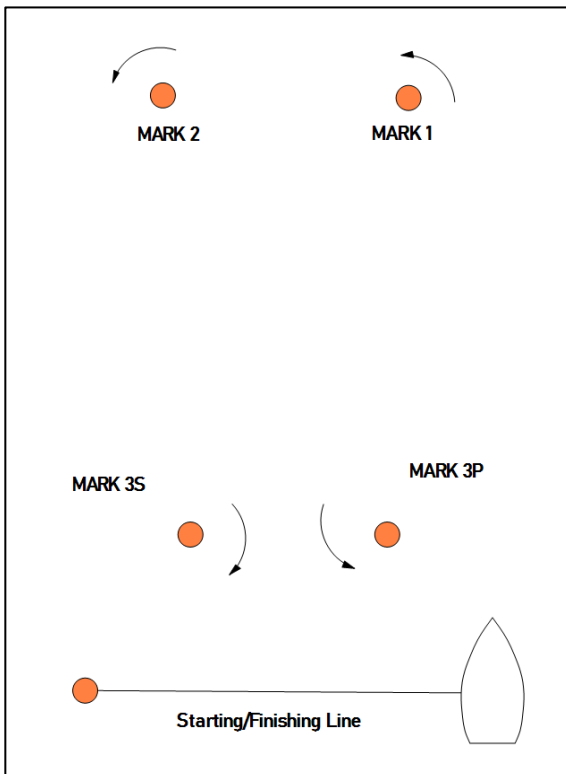
## Course 1

Start – 1 – 2 – 3P/3S – 1 – 2 – 3P/3S – Finish



## Course 2

Start – 1 – 2 – 3P/3S – 1 – 2 – 3P/3S – Finish

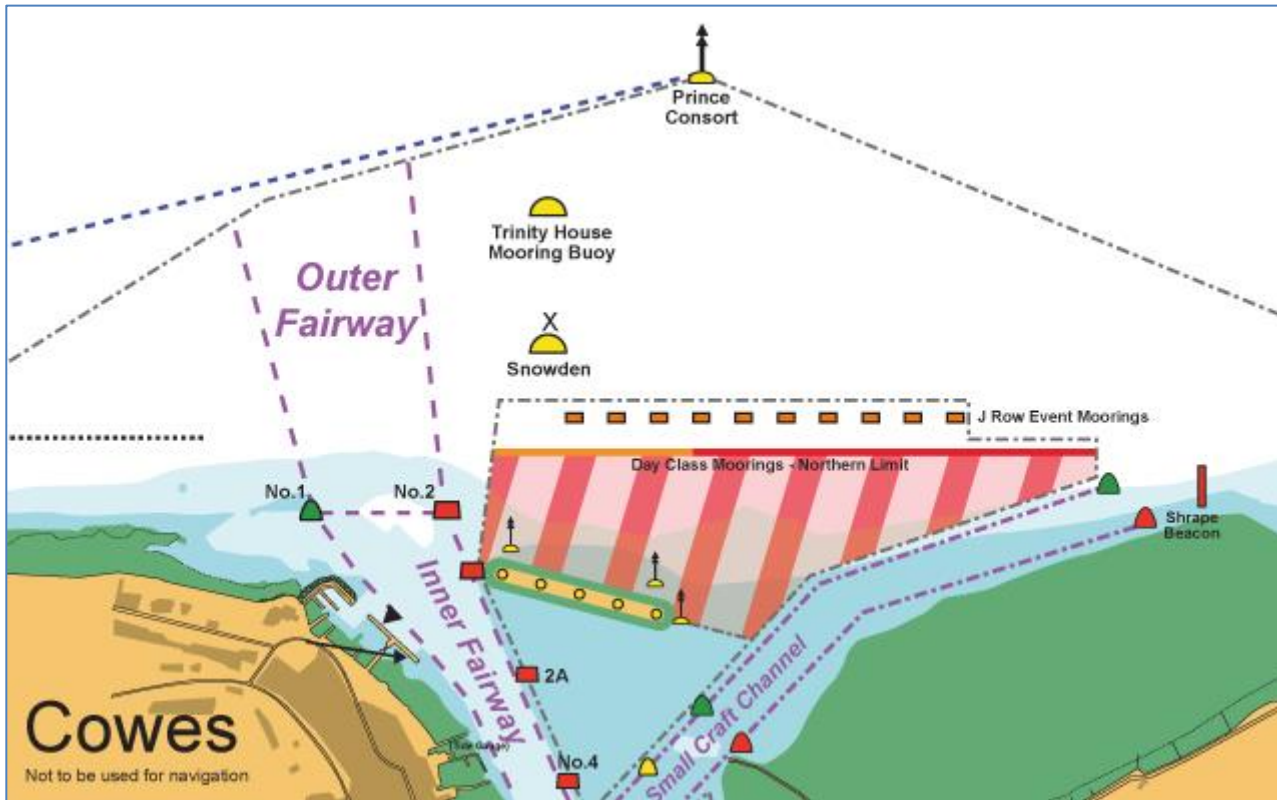




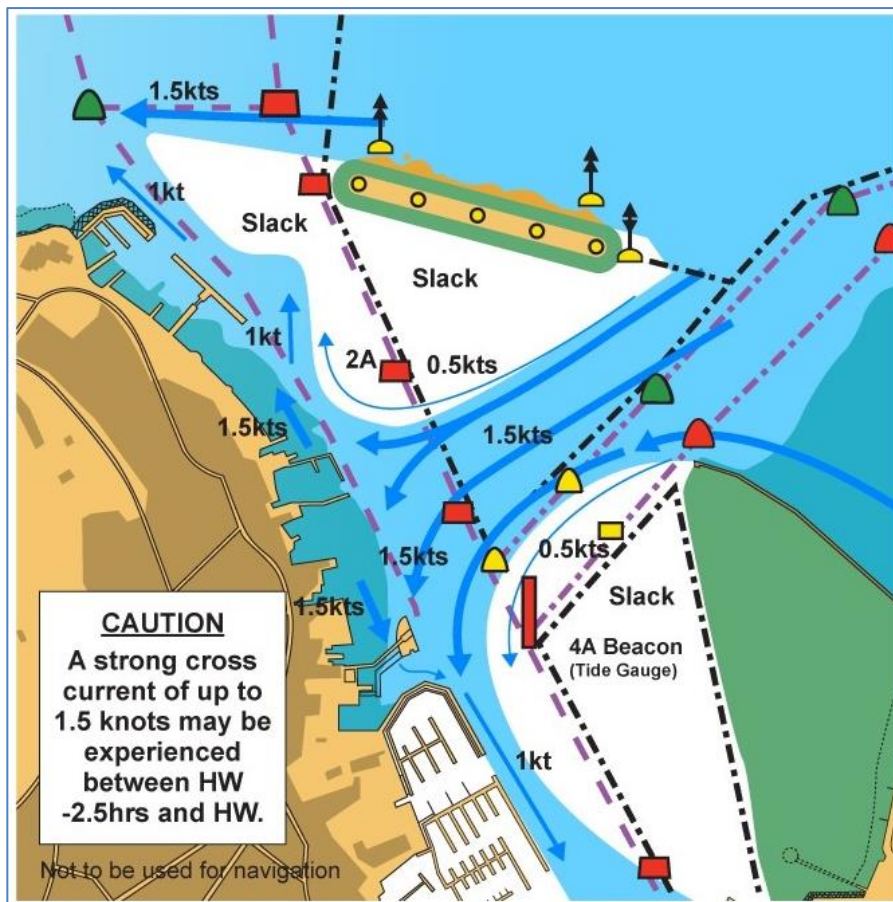
# Appendix 2

## Cowes Harbour chart

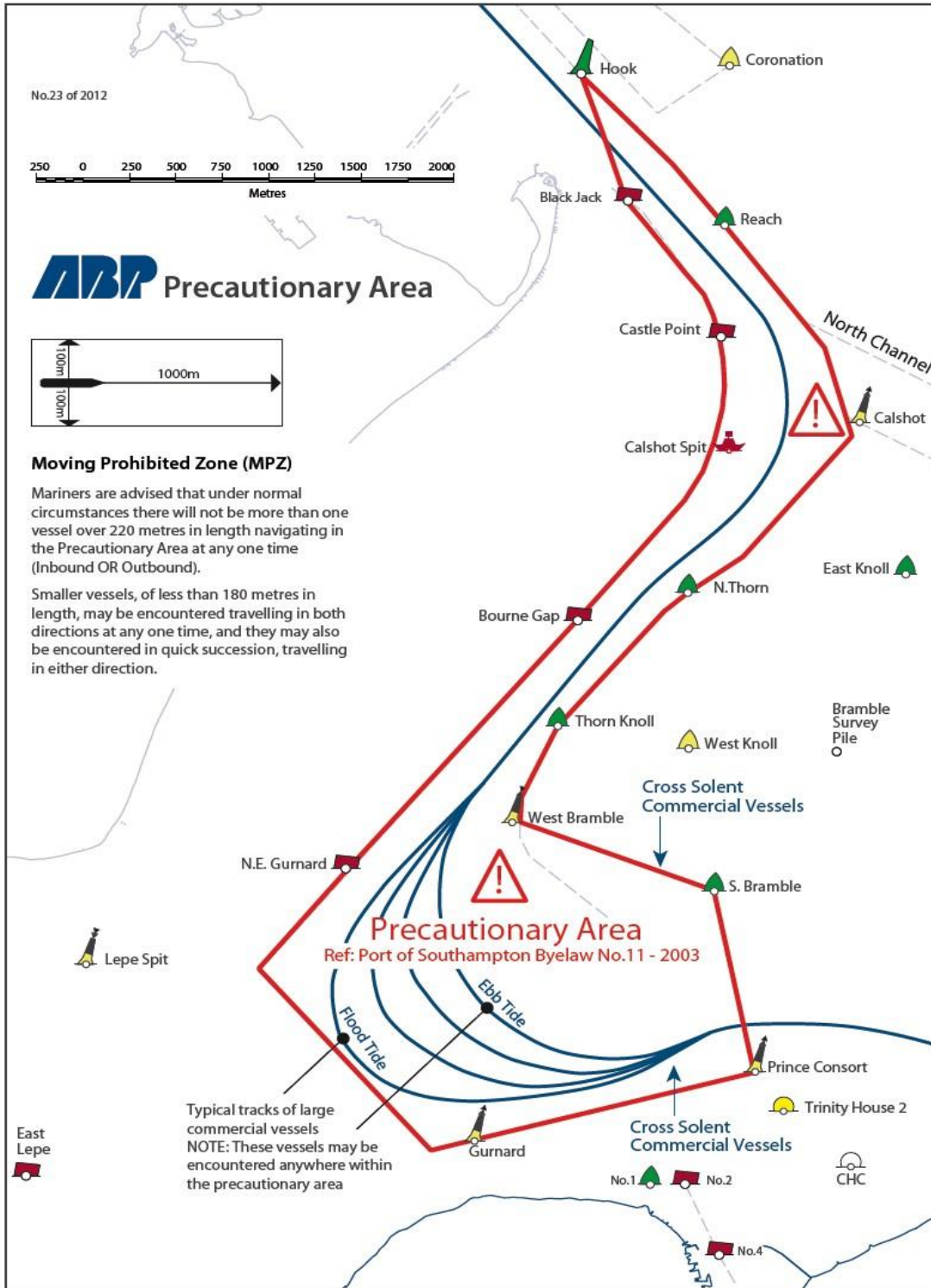
### Cowes Harbour Breakwater and Harbour Tidal Flows



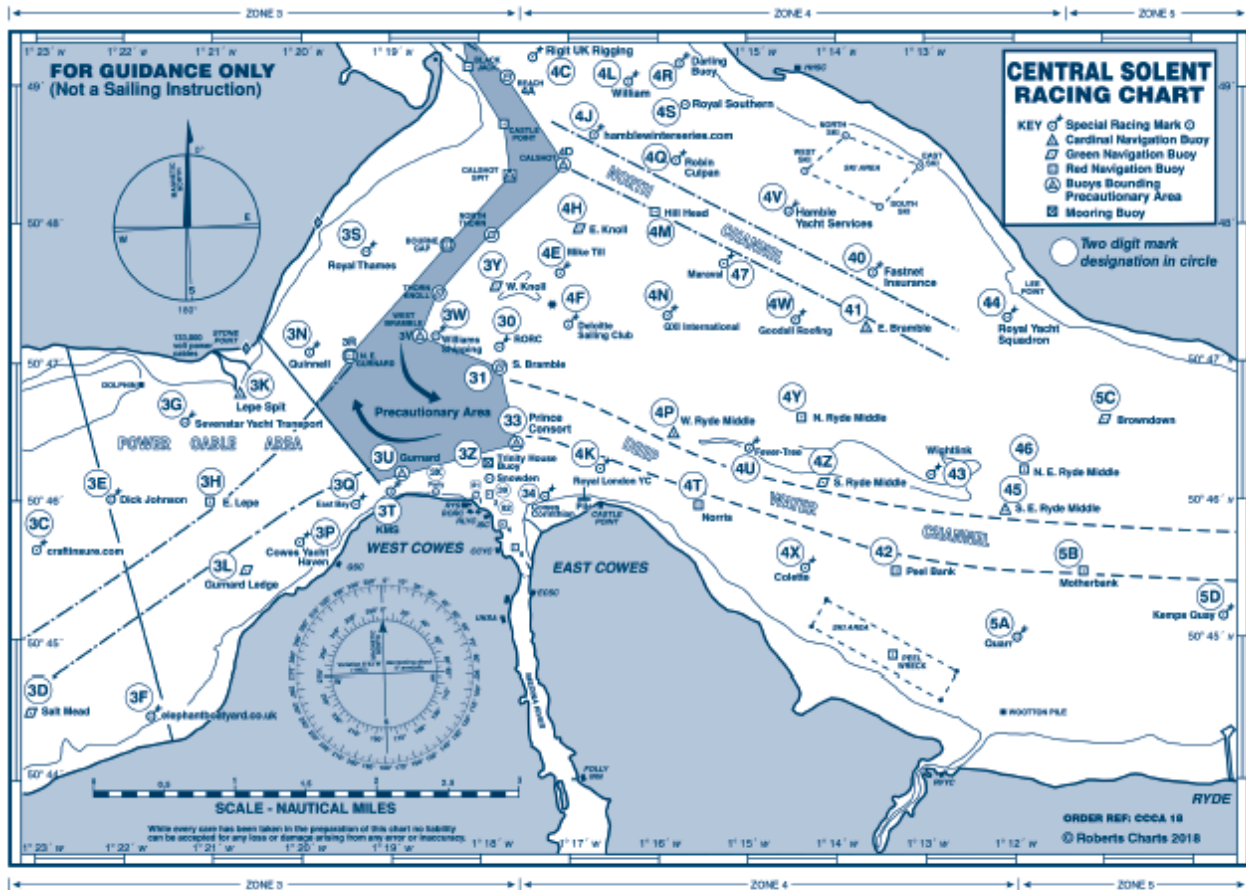
Dayboats are advised to exit/enter the harbour via the small craft channel when possible



# Appendix 3



# Appendix 4



## Central Solent Course Mark Two Digit Identifiers 2018

3A	West Lepe	30	RORC	4V	Hamble Yacht Services
3B	Newtown East	31	South Bramble	4W	Goodall Roofing
3C	craftinsure.com	33	Prince Consort	4X	Colette
3D	Salt Mead	34	Cowes Corinthian	4Y	North Ryde Middle
3E	Dick Johnson	39	Snowden	4Z	South Ryde Middle
3F	elephantboatyard.co.uk	4C	Rigit UK Rigging	40	Fastnet Insurance
3G	Sevenstar Yacht Transport	4E	Mike Till	41	East Bramble
3H	East Lepe	4F	Deloitte Sailing Club	42	Peel Bank
3K	Lepe Spit	4H	East Knoll	43	Wightlink
3L	Gurnard Ledge	4J	hamblewinterseries.com	44	Royal Yacht Squadron
3N	Quinnell	4K	Royal London YC	45	S E Ryde Middle
3P	Cowes Yacht Haven	4L	William	46	N E Ryde Middle
3Q	East Bay	4M	Hillhead	47	Maraval
3S	Royal Thames	4N	QXI International	5A	Quarr
3T	KMS	4P	West Ryde Middle	5B	Motherbank
3U	Gurnard	4Q	Robin Culpan	5C	Browdown
3W	Williams Shipping	4R	Darling Buoy	5D	Kemps Quay
3X	Party	4S	Royal Southern	82	No 2 Cowes Harbour Buoy
3Y	West Knoll	4T	Norris	91	RYS ODM Finishing Mark
3Z	Trinity House Buoy	4U	Fever Tree		